

Fiordland National Park Subconductor Spaces

Project: Replacement of Subconductor Spacers, Invercargill-Manapouri 220kV & Manapouri-Tiwai 220kV A Lines

Client: Transpower NZ Ltd

Location: Fiordland National Park

Contract Value: NZ\$450,000

Electrix was contracted to replace the subconductor spacers on 105 spans on the lines from the Manapouri Power Station in the Fiordland National Park. 35 out of the 100 spans were located in West Arm, Manapouri with access only by barge 30km across Lake Manapouri. The other 70 spans were accessed via the Borland Road a transmission line access road over the 998 metre Borland Saddle.

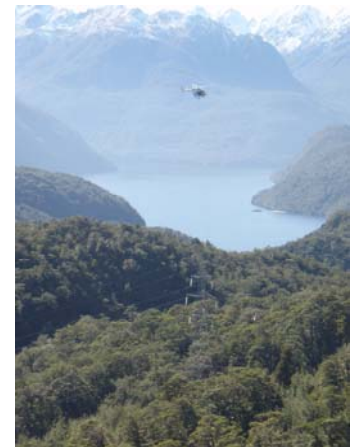
The work was identified as part of Transpower's condition based planned routine maintenance. The scope of work included replacement of subconductor spacers on :

- 29 spans on Manapouri-Tiwai A line
- 76 spans on Invercargill-Manapouri A line

The works were carried out in partnership with Helicopters Otago whose highly skilled pilots and extensive communications systems contributed significantly to on site productivity and safety performance.

On both lines the work involved traversing the 1150 metre span across the West Arm of Lake Manapouri. Due to the proximity to native vegetation below the conductors the work was carried out without the lines in service. Whilst the lines may have been out of service the most effective method of replacement utilized Electrix Ltd live line helikarts and live line techniques. The use of helikarts provided several advantages over conventional techniques including ease traversing strain towers and not needing to access every tower structure by vehicle in the mountainous terrain. The work was completed without incident or accident in the remote and challenging environment.

Communications from within the national park was only possible using satellite phones. Good environmental management was a priority within the World Heritage Fiordland National Park. Detailed environmental risk analysis was undertaken and environmental protection instructions issued to field staff. Excellent on site management ensured the work was successfully completed whilst maintaining high environmental standards.



Electrix Limited
 2 George Bourke Drive,
 Mt. Wellington
 Auckland
 PO Box 1688, Auckland
 New Zealand
 Phone: +64-9-270 1700
 Fax: +64-9-270 1701